



Government of India
Ministry of Earth Sciences



India Meteorological Department

PRESS RELEASE-3

Time of issue: 1700 hours IST

Dated: 25th May, 2024

Sub: Deep Depression over Eastcentral Bay of Bengal (Cyclone Alert for West Bengal Coast)

Yesterday's depression over eastcentral Bay of Bengal moved nearly north-northeastwards and intensified into a deep depression over the same region in the early morning (0530 hours IST) of today, the 25th May, 2024. Thereafter, it moved nearly northwards and lay centered at 1130 hrs IST over the same region near latitude 18.2°N and longitude 89.7°E, about 420 km south of Khepupara (Bangladesh), about 420 km south-southeast of Sagar Islands (West Bengal) and 460 km south-southeast of Canning (West Bengal).

It is very likely to continue to move nearly northwards and intensify into a **Cyclonic Storm** over eastcentral & adjoining north Bay of Bengal around 25th May evening. Continuing to move further northwards, it would intensify into a **Severe Cyclonic Storm** by 26th May morning and **cross Bangladesh and adjoining West Bengal coasts between Sagar Island and Khepupara by 26th May midnight as a Severe Cyclonic Storm with wind speed of 110-120 gusting to 135 kmph.**

Forecast track and intensity are given in the following table:

Date/Time (IST)	Position (Lat. °N/ long. °E)	Maximum sustained surface wind speed (Kmph)	Category of cyclonic disturbance
25.05.24/1130	18.2/89.7	55-65 gusting to 75	Deep Depression
25.05.24/1730	18.8/89.6	60-70 gusting to 80	Cyclonic Storm
25.05.24/2330	19.4/89.6	75-85 gusting to 95	Cyclonic Storm
26.05.24/0530	20.0/89.5	95-105 gusting to 115	Severe Cyclonic Storm
26.05.24/1130	20.7/89.4	110-120 gusting to 135	Severe Cyclonic Storm
26.05.24/2330	21.9/89.4	110-120 gusting to 135	Severe Cyclonic Storm
27.05.24/1130	23.1/89.5	60-70 gusting to 80	Cyclonic Storm
27.05.24/2330	24.2/89.9	40-50 gusting to 60	Depression
28.05.24/1130	25.3/90.3	20-30 gusting to 40	Well Marked Low Pressure Area

Warnings (Graphics Attached):

Heavy Rainfall Warning:

(a) **West Bengal:** Light to moderate rainfall at most places with **heavy to very heavy rainfall** at a few places is likely over coastal districts of West Bengal and eastern districts of Gangetic West Bengal adjacent to Bangladesh on 26th & 27th with isolated **extremely heavy rainfall** over these districts on 26th May.

Light to moderate rainfall at most places with **heavy to very heavy rainfall** at isolated places likely over eastern districts of Sub-Himalayan West Bengal on 27th and 28th May.

(b) **Odisha:** Light to moderate rainfall at most places with isolated **heavy rainfall** likely over North Coastal Odisha on 25th & 26th May.

(c) **Northeastern States:** Light to moderate rainfall at most places with **heavy to very heavy rainfall** at isolated places is likely over Mizoram, Tripura and South Manipur on 26th and over

Contact: Cyclone Warning Division, Office of the Director General of Meteorology, India Meteorological Department, Ministry of Earth Sciences.

E-mail: cyclonewarningdivision@gmail.com, Website: rsmcnewdelhi.imd.gov.in

Spatial rainfall distribution: Isolated: <25%, A few: 26-50%, Many: 51-75%, Most: 76-100%

Rainfall amount (mm): Heavy rain: 64.5 – 115.5, Very heavy rain: 115.6 – 204.4, Extremely heavy rain: 204.5 or more.

Assam, Meghalaya, Arunachal Pradesh, Nagaland, Mizoram, Manipur & Tripura on 27th & 28th May. Isolated **extremely heavy rainfall** is also likely over Assam, Meghalaya on 27th & 28th May, Arunachal Pradesh on 28th May and Mizoram & Tripura on 27th May.

(d) **Andaman Islands:** Light to moderate rainfall at most places with **heavy rainfall** at isolated places over north Andaman Islands on 25th May.

Wind Warning:

(a) Bay of Bengal:

❖ **Squally wind speed reaching 50-60 kmph gusting to 70 kmph** is prevailing over central Bay of Bengal. It is likely to become **Gale wind speed reaching 60-70 kmph gusting to 80 kmph** from evening to today, the 25th May.

❖ It would increase further and extend to adjoining areas of North Bay of Bengal becoming **Gale wind speed reaching 70-80 kmph gusting to 90 kmph** from evening of today, the 25th May and **100-110 kmph gusting to 120 kmph** over North Bay of Bengal from morning and **110-120 kmph gusting to 135 kmph** from evening of 26th May.

Gale wind speed reaching 70-80 kmph gusting to 90 kmph is likely over adjoining central Bay of Bengal from 26th morning for subsequent 24 hours and decrease thereafter.

(b) Along & off Bangladesh and West Bengal coasts:

❖ **Squally wind speed reaching 40-50 kmph gusting to 60 kmph** is likely along & off Bangladesh and West Bengal & adjoining North Odisha coasts from 25th May evening. It is likely to increase becoming **gale wind speed reaching 60-70 kmph gusting to 80 kmph** from morning of 26th May and **100-120 kmph gusting to 135 kmph** along & off Bangladesh and adjoining West Bengal coasts from evening of 26th May for subsequent 12 hours.

❖ **Squally wind speed reaching 40-50 kmph gusting to 60 kmph** is likely to commence over Howrah, Hoogly, Kolkata and East Medinipur districts from evening of 26th May. It will increase gradually becoming **Gale wind speed reaching 70-80 kmph gusting to 90 kmph** over these districts during night of 26th May except East Medinipur where the wind speed may reach up to **60-70 kmph gusting to 80 kmph** during the same period.

(c) Along & off Odisha coasts:

Squally wind speed reaching 40-50 kmph gusting to 60 kmph is likely from 25th May evening to 27th May morning

(d) South Bay of Bengal, Andaman Islands and Andaman Sea:

Squally wind speed reaching 40-50 kmph gusting to 60 kmph is likely over Andaman Islands and North Andaman Sea during next 12 hours.

(e) Northeastern States:

Squally wind speed reaching 50-60 kmph gusting to 70 kmph is likely over Mizoram Tripura & south Manipur on 26th & 27th May and **40-50 kmph gusting to 60 kmph** is likely over South Assam and Meghalaya on 27th May.

Storm surge warning:

Storm surge of about 1 meter above astronomical tide is likely to inundate low lying areas of coastal West Bengal and 3-4 m above astronomical tide likely to inundate low lying areas of coastal Bangladesh around the time of landfall.

Sea condition warning:

(a) Central and North Bay of Bengal:

Rough to very rough sea condition is prevailing over central Bay of Bengal. It would become high over central Bay of Bengal on 25th May & 26th May and High to Very High over North Bay of Bengal from 25th evening till 27th May morning.

(b) Along & off Bangladesh and West Bengal coasts

Rough to very rough sea condition is likely along & off Bangladesh and West Bengal coasts from 25th May evening. It would become high to very high along & off Bangladesh and West Bengal coasts from 26th morning onwards till 27th May morning.

(c) Along & off North Odisha coast:

Rough to very rough sea condition is likely over along & off North Odisha coast from 25th May evening to 27th May morning.

(d) Along & off Andaman Islands:

Rough to very rough sea condition is likely over Andaman Islands and North Andaman Sea during next 12 hours.

Damage Expected over South & North 24 Parganas, Howrah, Hoogly, Kolkata & adjoining East Medinipur districts of west Bengal:

- Major damage to thatched houses/ huts. Possibilities of damage to vulnerable structure.
- Unattached metal sheets may fly.
- Breaking of tree branches, uprooting of trees. Major damage to banana and papaya trees. Dead limbs may blow off from trees.
- Damage to power and communication lines due to breaking of branches and uprooting of trees.
- Damage to Kutcha and minor damage to Pucca roads due to heavy rain.
- Damage to paddy crops, horticultural crops and orchards.
- Inundation of low-lying areas and localized flooding
- Occasional reduction in visibility due to heavy rainfall.
- Disruption of traffic due to water logging and squally winds

Action Suggested for South & North 24 Parganas, Howrah, Hoogly, Kolkata & adjoining East Medinipur districts of West Bengal:

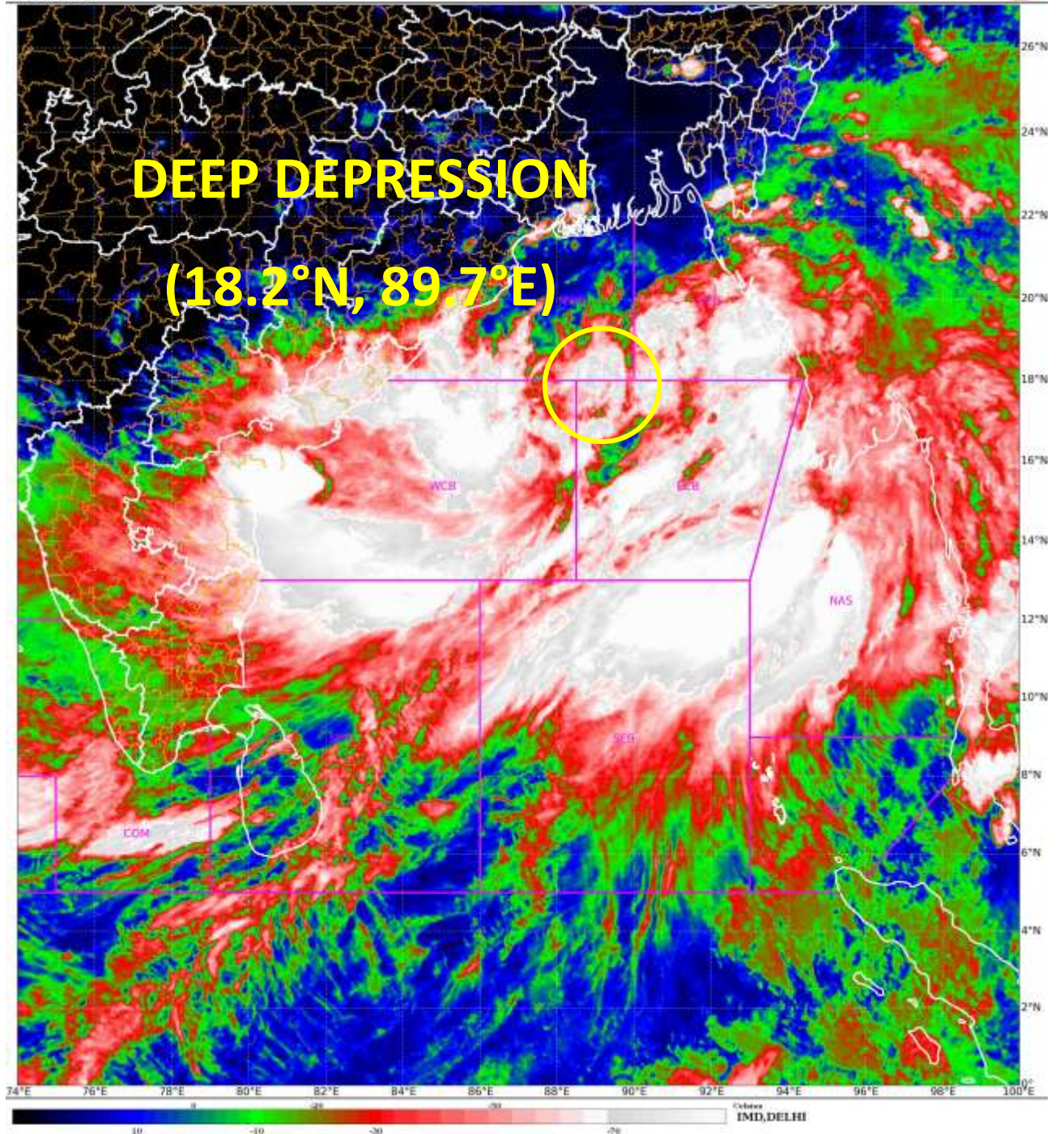
- Total suspension of fishing operations.
- Surface transport and shipping operations need to be regulated
- Onshore & Offshore operation need to be regulated as per guidelines
- Coastal hutment dwellers to be in safer places.
- People in affected areas to remain indoors.
- Avoid going to areas that face the water logging problems often.
- Avoid staying in vulnerable structure.

Fishermen Warning (graphics attached):

Fishermen are advised not to venture into south Bay of Bengal and Andaman Sea till 27th May, central Bay of Bengal till 26th May and North Bay of Bengal from 25th May till 27th May. Fishermen out at sea are advised to return to the coast.

The system is under continuous surveillance and the next Press Release will be issued at 1430 hours IST of 26th May, 2024.

For regular updates kindly visit www.rsmcnewdelhi.imd.gov.in and www.mausam.imd.gov.in



Contact: Cyclone Warning Division, Office of the Director General of Meteorology,
India Meteorological Department, Ministry of Earth Sciences.

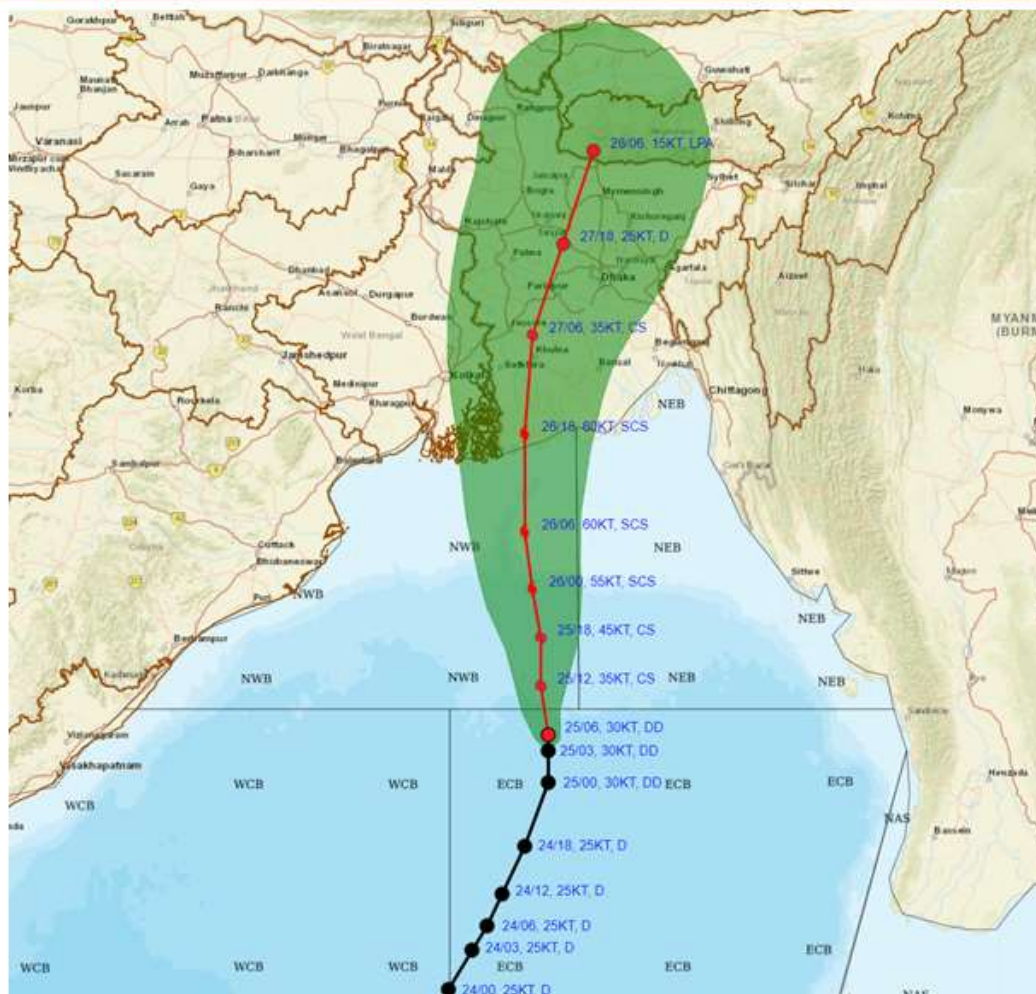
E-mail: cyclonewarningdivision@gmail.com, Website: rsmcnewdelhi.imd.gov.in

Spatial rainfall distribution: Isolated: <25%, A few: 26-50%, Many: 51-75%, Most: 76-100%

Rainfall amount (mm): Heavy rain: 64.5 – 115.5, Very heavy rain: 115.6 – 204.4, Extremely heavy rain: 204.5 or more.



FORECAST TRACK ALONGWITH CONE OF UNCERTAINTY IN ASSOCIATION WITH DEEP DEPRESSION OVER EASTCENTRAL BAY OF BENGAL BASED ON 0600 UTC (1130 IST) OF 25TH MAY 2024.



DATE/TIME IN UTC

IST=UTC + 0530

L: LOW PRESSURE AREA

WML: WELL MARKED LOW PRESSURE AREA

D: DEPRESSION (17-27 KT)

DD: DEEP DEPRESSION (28-33 KT)

CS: CYCLONIC STORM (34-47 KT)

SCS: SEVERE CYCLONIC STORM (48-63KT)

VSCS: VERY SEVERE CYCLONIC STORM (64-89 KT)

ESCS: EXTREMELY SEVERE CYCLONIC STORM (90-119 KT)

SuCS: SUPER CYCLONIC STORM (≥ 120 KT)

● LESS THAN 34 KT

○ 34-47 KT

○ ≥ 48 KT

— OBSERVED TRACK

— FORECAST TRACK

▲ CONE OF UNCERTAINTY

Forecast	DISTANCE (KM) AND DIRECTION FROM STATIONS		
Date and Time (UTC)	Canning	Khepupara	Sagar Island
25.05.24/0600	460, SSE	420, S	420, SSE
26.05.24/0600	180, SSE	160, SSW	180, SE
27.05.24/0600	130, NE	150, NNW	220, NE

Contact: Cyclone Warning Division, Office of the Director General of Meteorology, India Meteorological Department, Ministry of Earth Sciences.

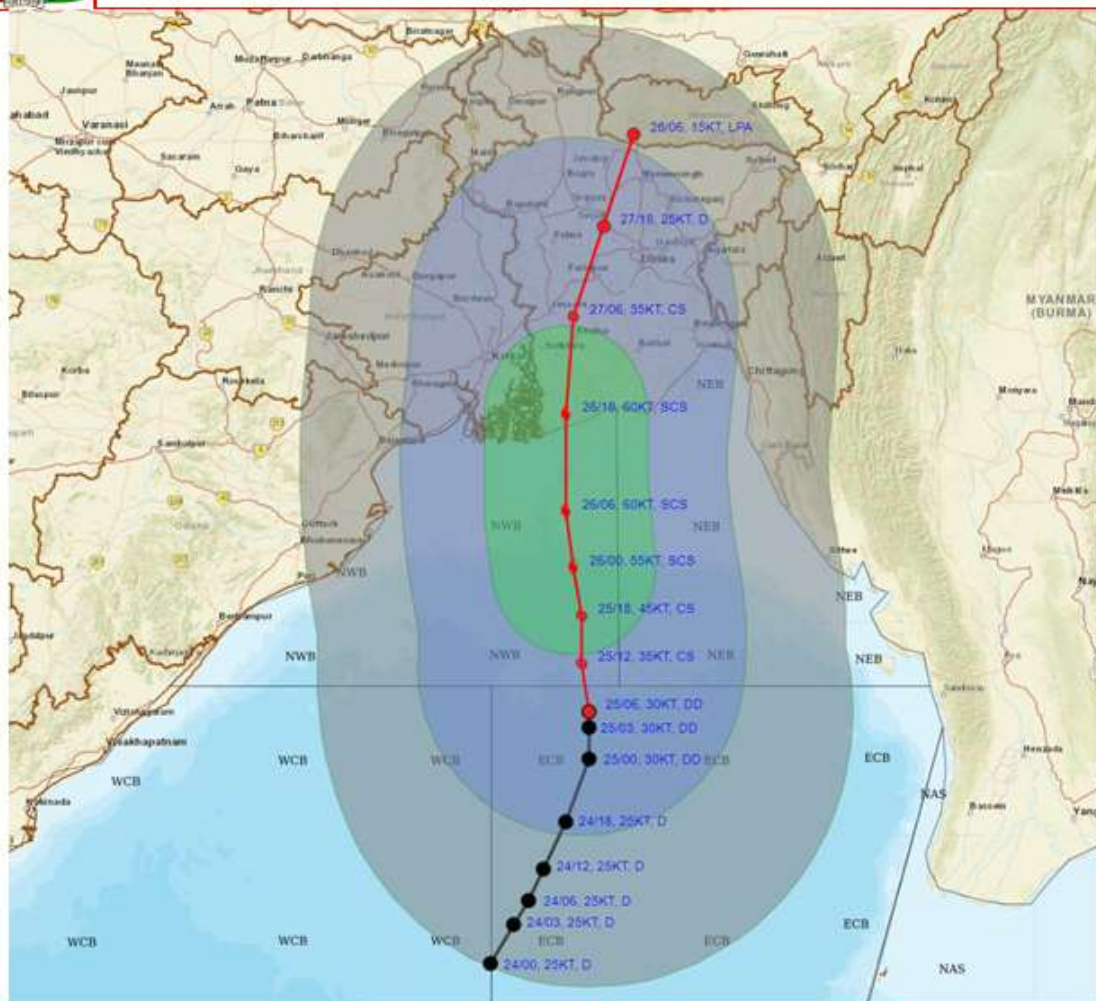
E-mail: cyclonewarningdivision@gmail.com, Website: rsmcnwedelhi.imd.gov.in

Spatial rainfall distribution: Isolated: <25%, A few: 26-50%, Many: 51-75%, Most: 76-100%

Rainfall amount (mm): Heavy rain: 64.5 – 115.5, Very heavy rain: 115.6 – 204.4, Extremely heavy rain: 204.5 or more.



FORECAST TRACK ALONGWITH QUADRANT WIND DISTRIBUTION IN ASSOCIATION WITH DEEP DEPRESSION OVER EASTCENTRAL BAY OF BENGAL BASED ON 0600 UTC (1130 IST) OF 25TH MAY 2024.



DATE/TIME IN UTC

IST=UTC + 0530

L: LOW PRESSURE AREA

WML: WELL MARKED LOW PRESSURE AREA

D: DEPRESSION (17-27 KT)

DD: DEEP DEPRESSION (28-33 KT)

CS: CYCLONIC STORM (34.47 KT)

SCS: SEVERE CYCLONIC STORM (48-63KT)

VSCS: VERY SEVERE CYCLONIC STORM (64.89 KT)

ESCS: EXTREMELY SEVERE CYCLONIC STORM (90-119 KT)

SuCS: SUPER CYCLONIC STORM (≥ 120 KT)

● LESS THAN 34 KT

○ 34.47 KT

● ≥ 48 KT

— OBSERVED TRACK

— FORECAST TRACK

— CONE OF UNCERTAINTY

AREA OF MAXIMUM SUSTAINED WIND SPEED:

■ 28-33 KT (52-61 KMPH)

■ 34-49 KT (62-91 KMPH)

■ 50-63 KT (92-117 KMPH)

■ ≥ 64 KT (≥118 KMPH)

IMPACT OVER THE SEA

MSW (knot/kmph)	Impact	Action
28-33 (52-61)	Very rough seas	Total suspension of fishing operations
34-49 (62-91)	High to very high seas	Total suspension of fishing operations
50-63 (92-117)	Very high seas	Total suspension of fishing operations
≥ 64 (≥118)	Phenomenal	Total suspension of fishing operations

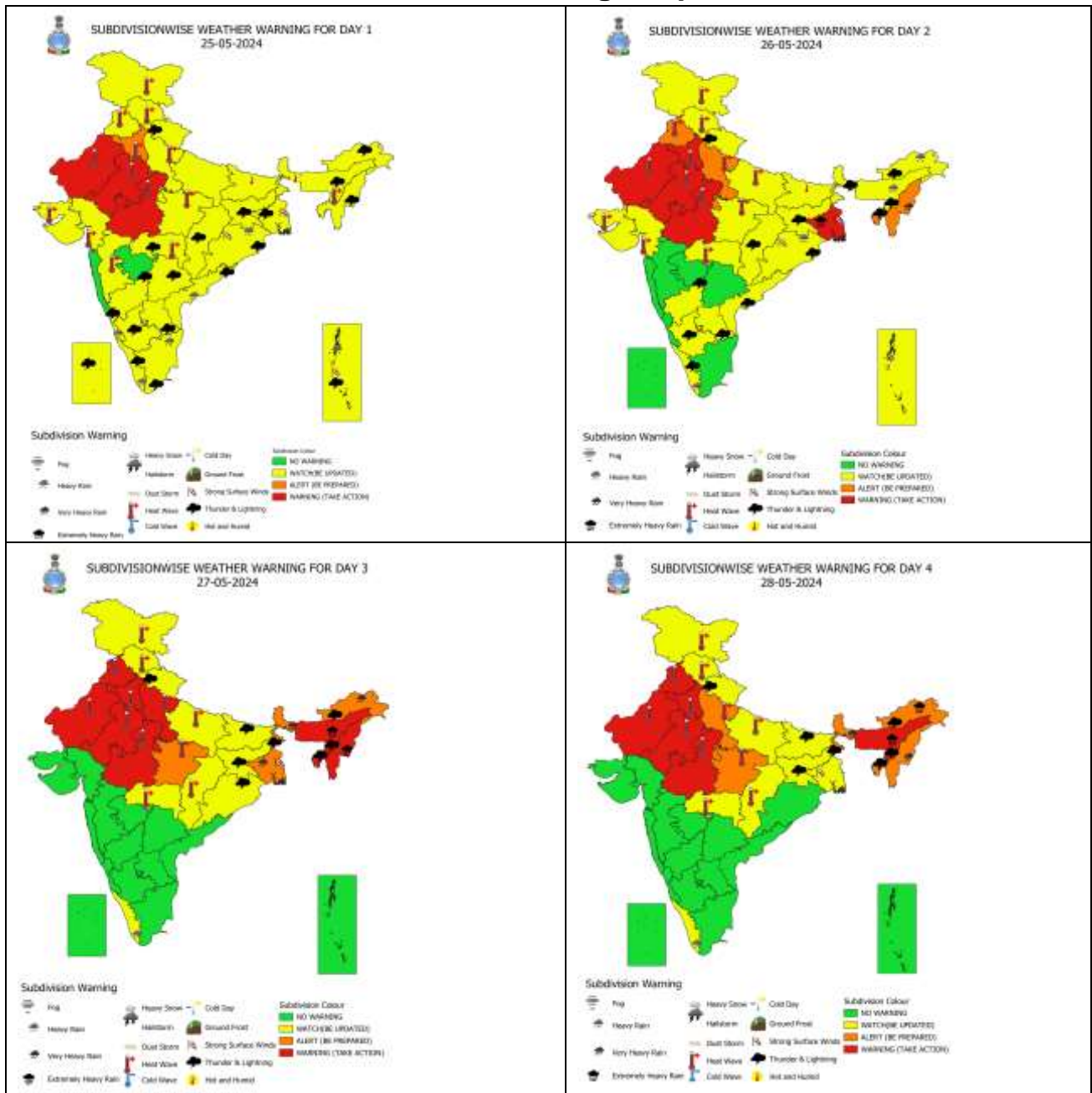
Contact: Cyclone Warning Division, Office of the Director General of Meteorology, India Meteorological Department, Ministry of Earth Sciences.

E-mail: cyclonewarningdivision@gmail.com, Website: rsmcnwdelhi.imd.gov.in

Spatial rainfall distribution: Isolated: <25%, A few: 26-50%, Many: 51-75%, Most: 76-100%

Rainfall amount (mm): Heavy rain: 64.5 – 115.5, Very heavy rain: 115.6 – 204.4, Extremely heavy rain: 204.5 or more.

All India Warning Graphics

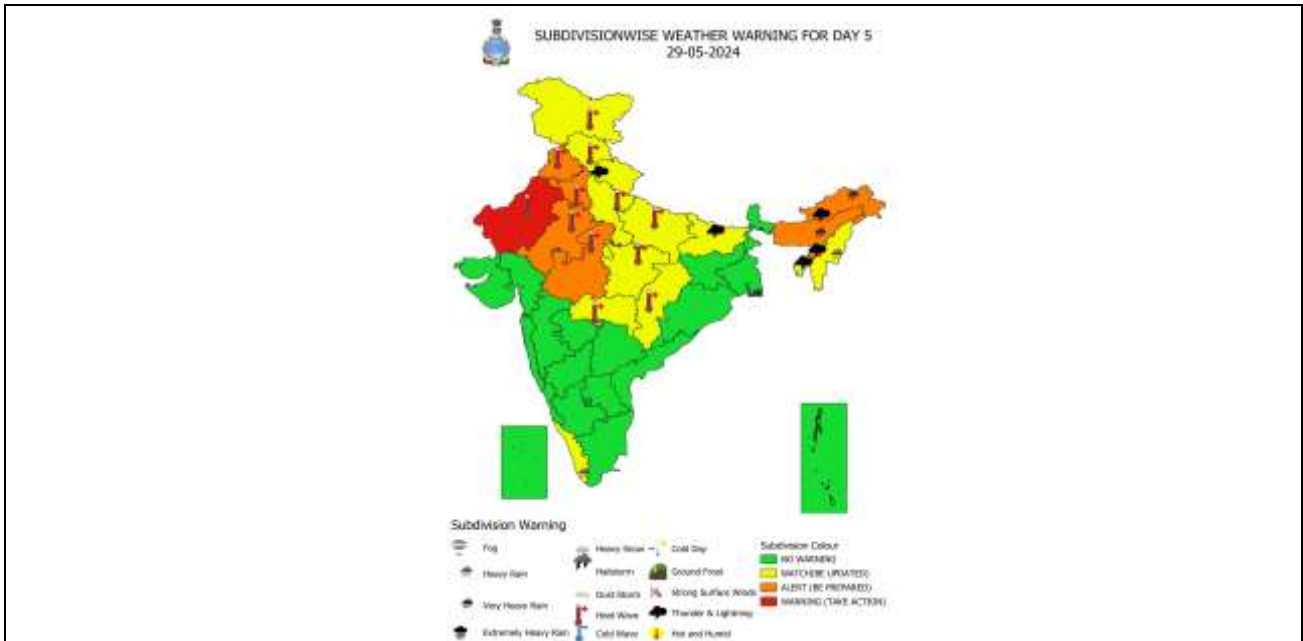


Contact: Cyclone Warning Division, Office of the Director General of Meteorology, India Meteorological Department, Ministry of Earth Sciences.

E-mail: cyclonewarningdivision@gmail.com, Website: rsmcnewdelhi.imd.gov.in

Spatial rainfall distribution: Isolated: <25%, A few: 26-50%, Many: 51-75%, Most: 76-100%

Rainfall amount (mm): Heavy rain: 64.5 – 115.5, Very heavy rain: 115.6 – 204.4, Extremely heavy rain: 204.5 or more.



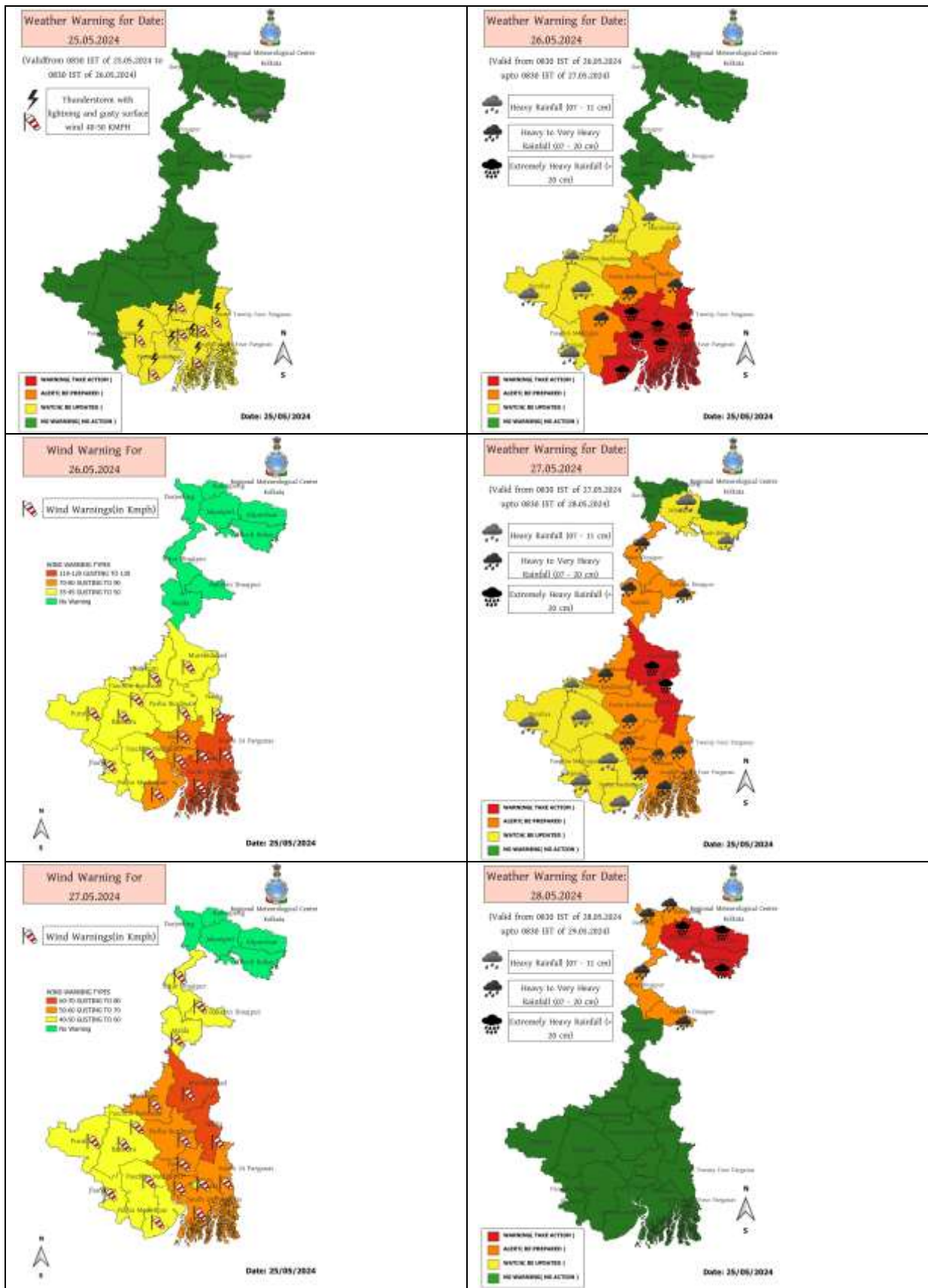
Contact: Cyclone Warning Division, Office of the Director General of Meteorology,
 India Meteorological Department, Ministry of Earth Sciences.

E-mail: cyclonewarningdivision@gmail.com, Website: rsmcnewdelhi.imd.gov.in

Spatial rainfall distribution: Isolated: <25%, A few: 26-50%, Many: 51-75%, Most: 76-100%

Rainfall amount (mm): Heavy rain: 64.5 – 115.5, Very heavy rain: 115.6 – 204.4, Extremely heavy rain: 204.5 or more.

Warning Graphics of West Bengal



Contact: Cyclone Warning Division, Office of the Director General of Meteorology, India Meteorological Department, Ministry of Earth Sciences.

E-mail: cyclonewarningdivision@gmail.com, Website: rsmcnwedelhi.imd.gov.in

Spatial rainfall distribution: Isolated: <25%, A few: 26-50%, Many: 51-75%, Most: 76-100%

Rainfall amount (mm): Heavy rain: 64.5 – 115.5, Very heavy rain: 115.6 – 204.4, Extremely heavy rain: 204.5 or more.

Warning Graphics for Odisha



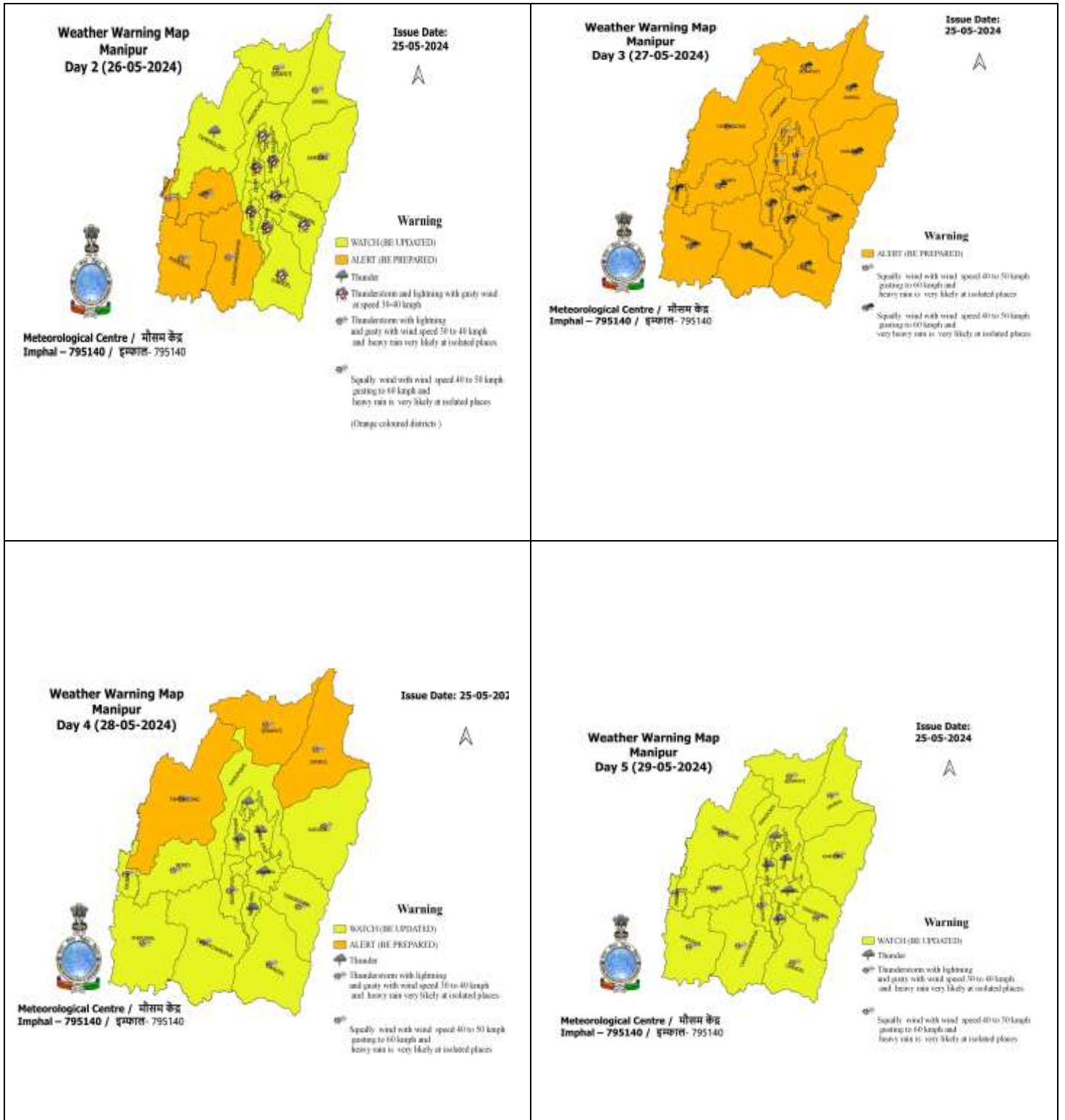
Contact: Cyclone Warning Division, Office of the Director General of Meteorology, India Meteorological Department, Ministry of Earth Sciences.

E-mail: cyclonewarningdivision@gmail.com, Website: rsmcnwdelhi.imd.gov.in

Spatial rainfall distribution: Isolated: <25%, A few: 26-50%, Many: 51-75%, Most: 76-100%

Rainfall amount (mm): Heavy rain: 64.5 – 115.5, Very heavy rain: 115.6 – 204.4, Extremely heavy rain: 204.5 or more.

Warning Graphics for Manipur



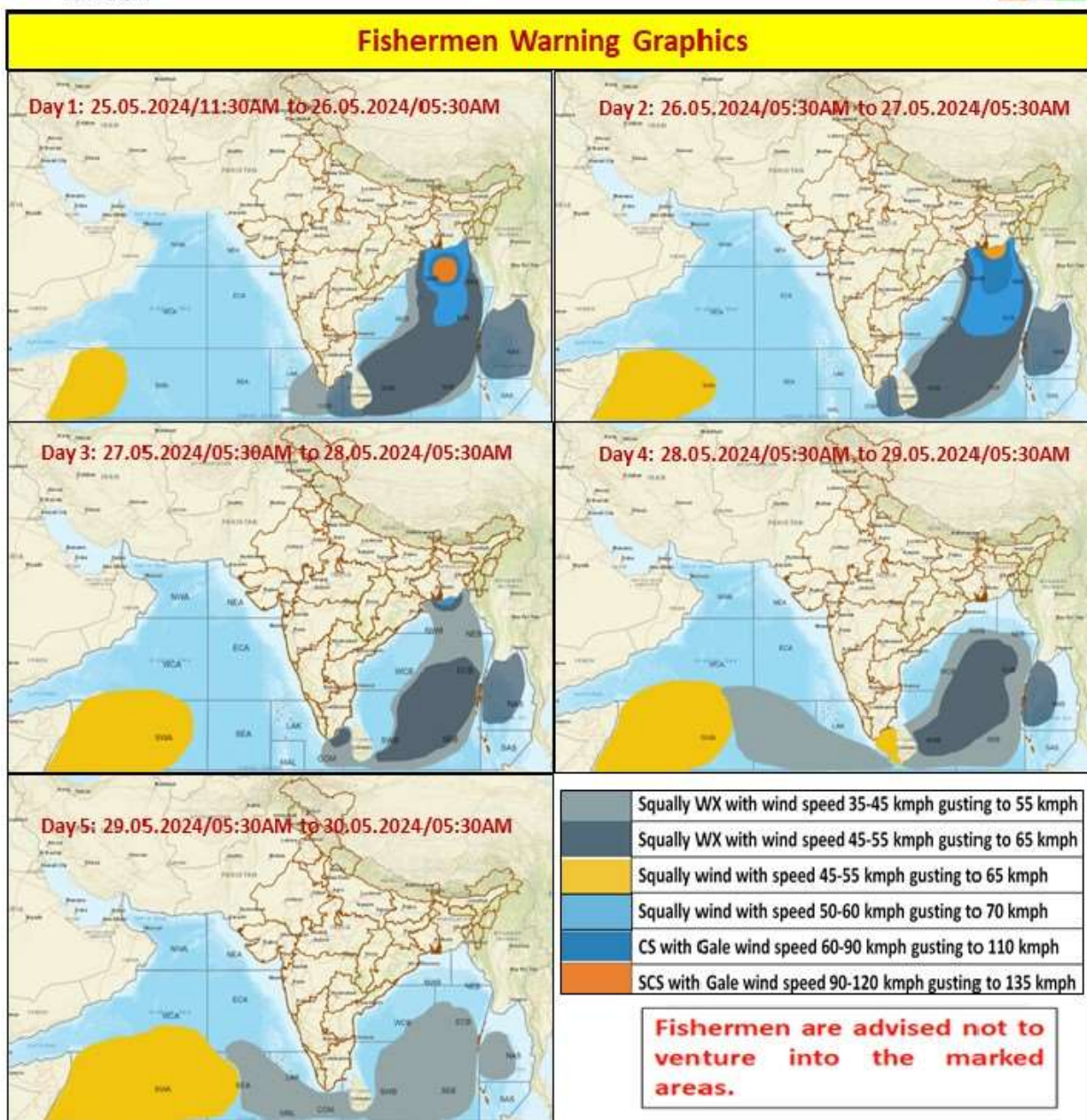
Contact: Cyclone Warning Division, Office of the Director General of Meteorology, India Meteorological Department, Ministry of Earth Sciences.

E-mail: cyclonewarningdivision@gmail.com, Website: rsmcnewdelhi.imd.gov.in

Spatial rainfall distribution: Isolated: <25%, A few: 26-50%, Many: 51-75%, Most: 76-100%

Rainfall amount (mm): Heavy rain: 64.5 – 115.5, Very heavy rain: 115.6 – 204.4, Extremely heavy rain: 204.5 or more.

Fishermen Warning Graphics



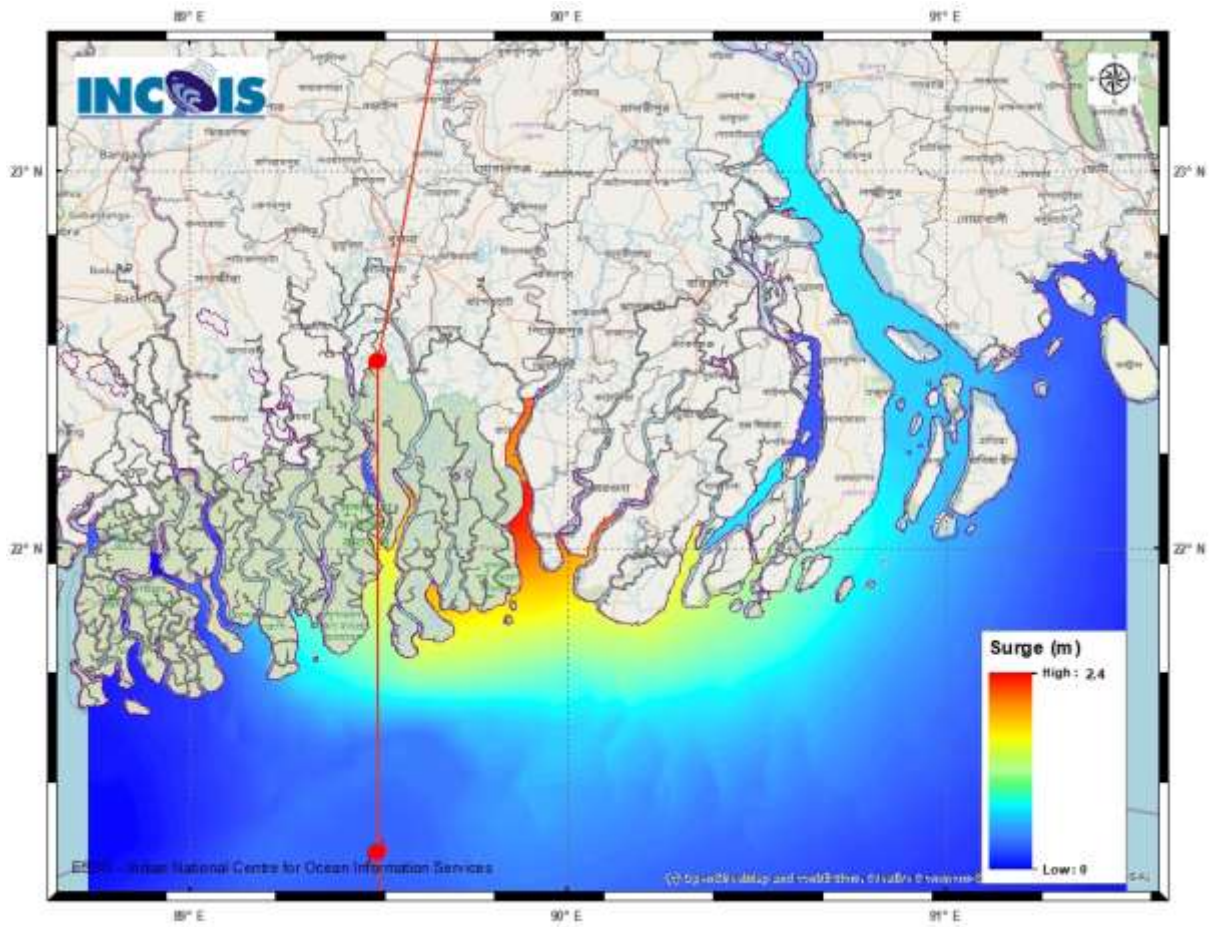
Contact: Cyclone Warning Division, Office of the Director General of Meteorology, India Meteorological Department, Ministry of Earth Sciences.

E-mail: cyclonewarningdivision@gmail.com, Website: rsmcnewdelhi.imd.gov.in

Spatial rainfall distribution: Isolated: <25%, A few: 26-50%, Many: 51-75%, Most: 76-100%

Rainfall amount (mm): Heavy rain: 64.5 – 115.5, Very heavy rain: 115.6 – 204.4, Extremely heavy rain: 204.5 or more.

Storm Surge Warning Graphics



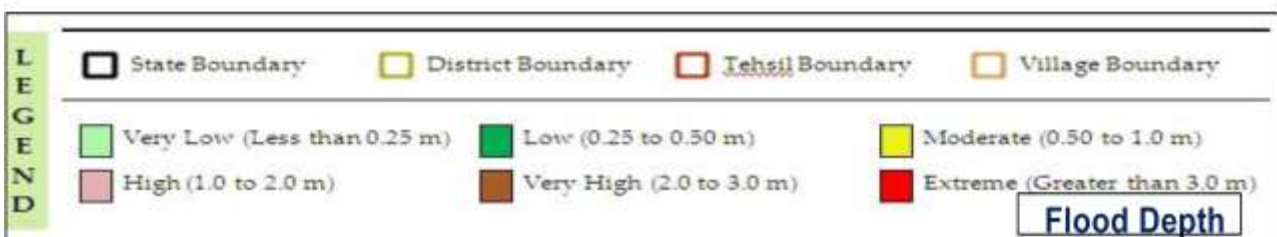
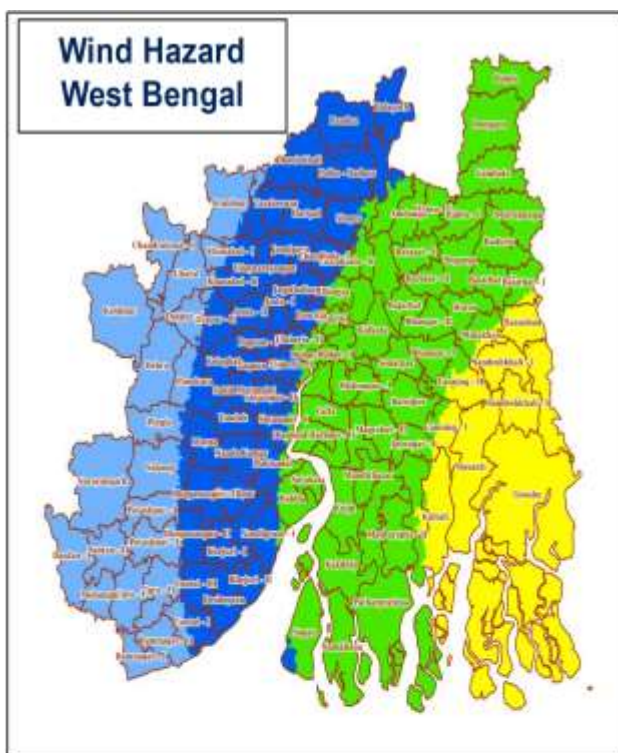
Contact: Cyclone Warning Division, Office of the Director General of Meteorology,
India Meteorological Department, Ministry of Earth Sciences.

E-mail: cyclonewarningdivision@gmail.com, Website: rsmcnewdelhi.imd.gov.in

Spatial rainfall distribution: Isolated: <25%, A few: 26-50%, Many: 51-75%, Most: 76-100%

Rainfall amount (mm): Heavy rain: 64.5 – 115.5, Very heavy rain: 115.6 – 204.4, Extremely heavy rain: 204.5 or more.

WIND AND FLOOD HAZARD MAPS FOR WEST BENGAL



Contact: Cyclone Warning Division, Office of the Director General of Meteorology,
India Meteorological Department, Ministry of Earth Sciences.

E-mail: cyclonewarningdivision@gmail.com, Website: rsmcnewdelhi.imd.gov.in

Spatial rainfall distribution: Isolated: <25%, A few: 26-50%, Many: 51-75%, Most: 76-100%

Rainfall amount (mm): Heavy rain: 64.5 – 115.5, Very heavy rain: 115.6 – 204.4, Extremely heavy rain: 204.5 or more.